




# MiLIVE

Premium Small-Diaphragm  
Condenser Microphone



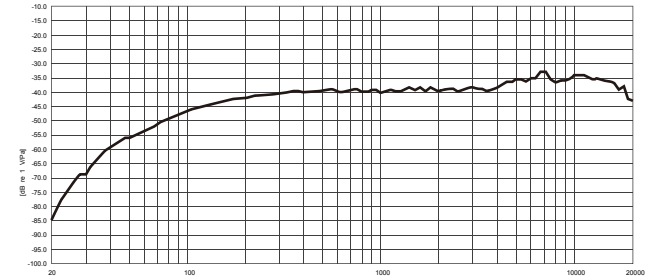
Love your MiLIVE ?  
share with us #relacart

-  @relacart
-  @relacart
-  @relacart

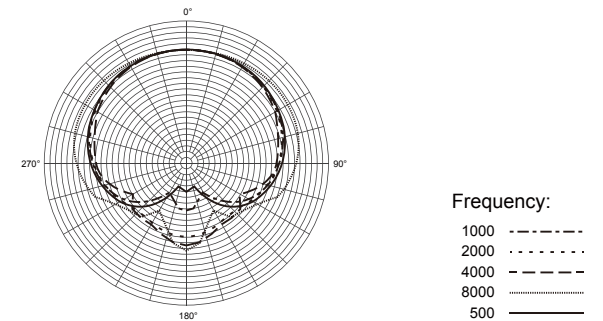


Scan the QR code  
to find out more

## 05 Frequency response

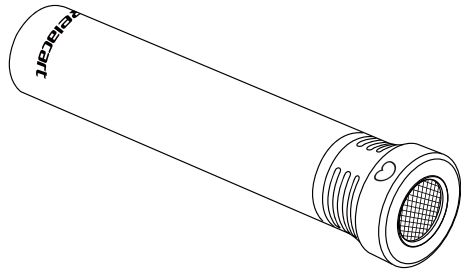


## 06 Directivity diagram



## 07 Specifications

Microphone Type:	Condenser microphone
Polar Pattern:	Cardioid
Frequency Response:	50Hz — 20KHz
Maximum Input SPL:	125dB SPL, 1KHz at 1% THD.
S/N Ratio:	71dB, 1KHz at 1% THD.
Sensitivity:	-41dB ± 2dB (0dB=1V/Pa, at 1KHz)
Dimensions:	25mm (φ) x 114mm (L)
Weight:	135g

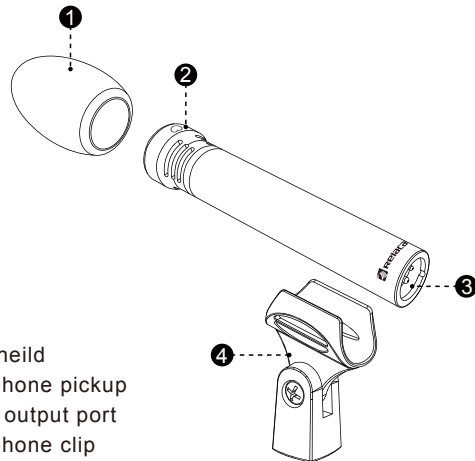


The Relacart MiLIVE is a premium 1/2-inch small-diaphragm condenser microphone designed for applications such as studio recording and live performance on stage. It also provides ultra-low self-noise and a smooth, balanced sound. It features the cardioid pattern and wide frequency response allow the MiLIVE to record the desired sound source. The cardioid pattern design enables high gain before feedback, as well as optimal sound isolation and minimal off-axis noise.

### Features:

- Metal structure, strong and durable.
- Cardioid pickup pattern.
- Ultra-low self-noise.
- XLR output connectors.
- Powered by 48V phantom power.
- Includes microphone clip and Windsheild.

## 01 Parts Guide

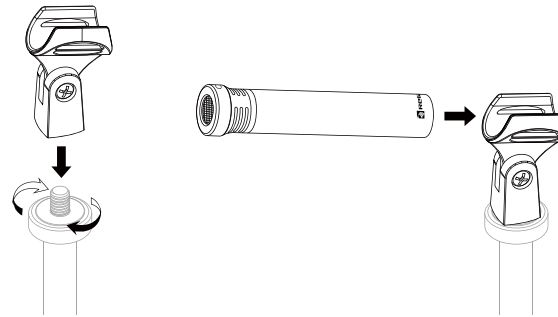


- ❶ Windsheild
- ❷ Microphone pickup
- ❸ XLR-3 output port
- ❹ Microphone clip

## 02 Product Installation

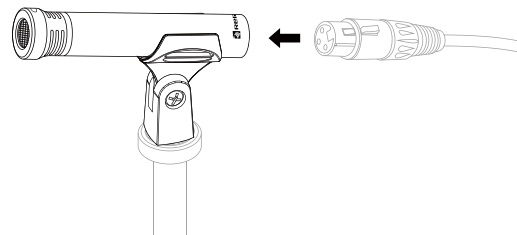
### Attaching the microphone

- ❶ Screw the microphone clamp to a stand.
- ❷ Place the microphone with its back end into the microphone clamp.
- ❸ Orient the microphone together with the microphone clamp.



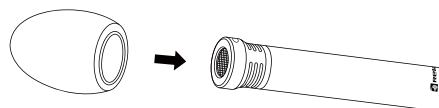
### Connecting the microphone

Connect the XLR-3 socket of the microphone cable (optional accessories) to the XLR-3 socket of the microphone.



### Using the windsheild

Connect the windsheild to the front of the microphone body.

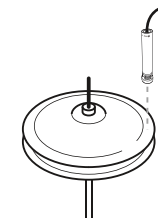


## 03 Application Operation

### Positioning the microphone: Drums / Percussions

Attention: When closing the hi-hat, a strong air current is created on the edge. If the microphone is positioned too close to the edge, interfering noise due to the air current can occur.

A: Natural, clear sound



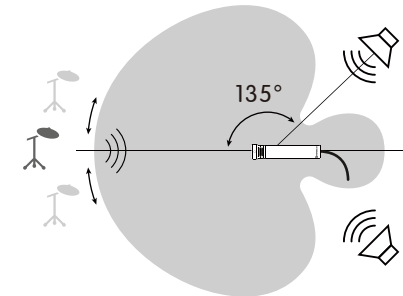
Position the microphone a few centimetres above the outer edge of the hi-hat aiming down. If necessary, remove unwanted low-frequency signal portions by high pass filtering.

B: More fundamental, little overtones



### Positioning the monitor loudspeakers

To prevent feedback and crosstalk, position your monitor loudspeakers in the angle area of the highest cancellation of the microphone (approx. 135°).



## 04 Product Dimensions

