

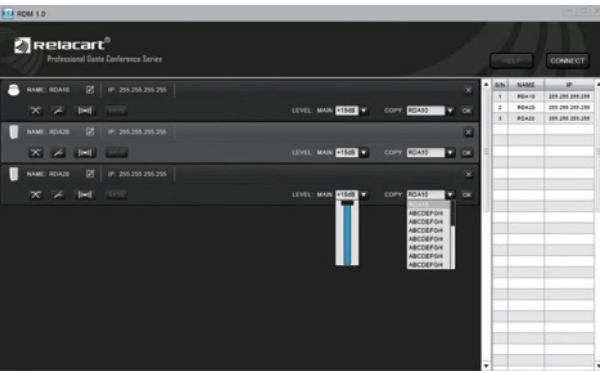


RDM Software Introduction

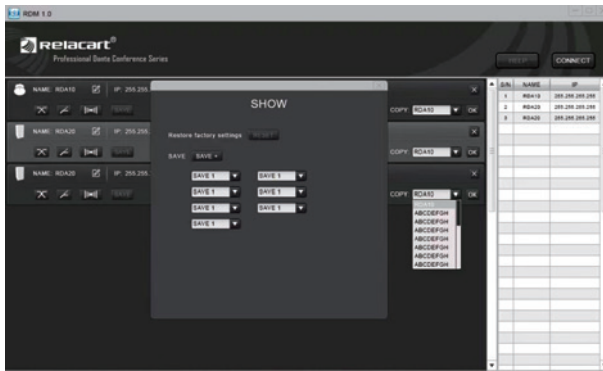
1.Connection method

1. Double-click the  software icon to open the software.
2. Click on the  button at the top right of the software interface to connect.

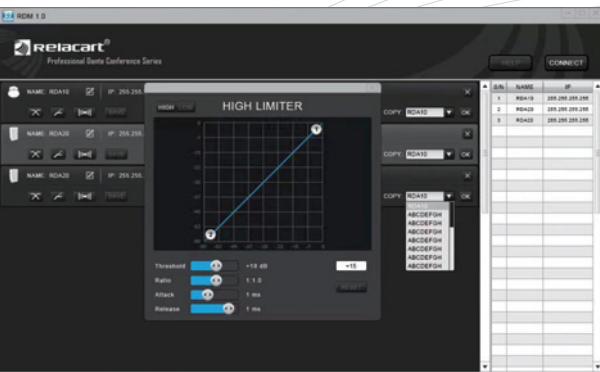
2.Key features of the software



Simple and easy-to-use management interface, display the name and IP of the device, convenient and accurate control of each device



Preset parameters can be saved and read, and the parameters of any device in the LAN can also be copied with one click





The tweeter and woofer LIMITER parameters can be set independently



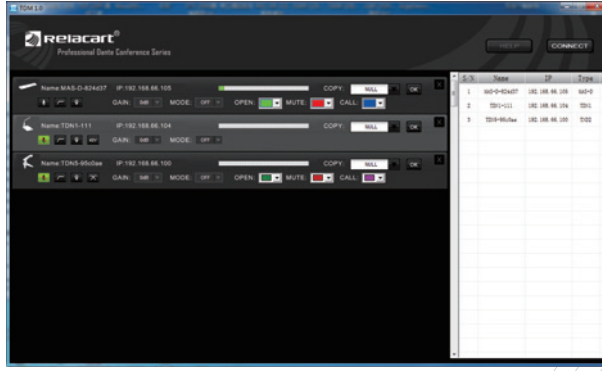
Both the tweeter and woofer can be set with 7-band equalization, high-pass filter and low-pass filter independently

TDM Software Introduction

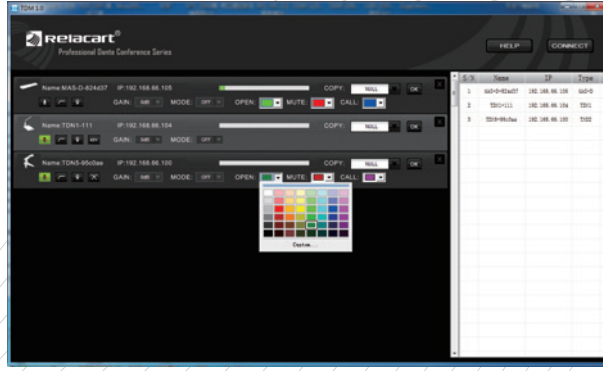
1.Connection method

1. Double-click the  software icon to open the software.
2. Click on the  button at the top right of the software interface to connect.

2.Key features of the software



Remotely control microphone mute, gain, low-cut switch, and work mode(ON/OFF/PTM/PTT) . The parameters of the same model microphone in the same LAN can be copied with one click



Some microphones support custom LED light color, you can customize the color of the indicator light in speaking state, mute state and call state through software



Some microphones support equalization adjustment function, 4-band equalization and high-pass filter can be set by software